

定位销 DCP30.1 Locator device DCP30.1

主要特点:

- 紧凑型设计
- 定位精度高
- 铝制壳体
- 2 面安装 (侧面)
- 4 种氮化活塞缸头
- 铜制导套
- 行程: 20, 40 mm
- 气缸缸径: 30 mm
- 2 个 G1/8" 进气口
- P+F 新电感式接近开关 (M12x1 接口)

Main characteristics:

- Compact design
- High accuracy of positioning
- Aluminum body
- 2 mounting areas (on the sides)
- 4 types of nitrided rods
- Bronze guiding bush
- Rod stroke: 20, 40 mm
- Integrated pneumatic cylinder bore 30 mm
- 2 feeding ports G1/8"
- New inductive proximity switch P+F (connection M12x1)



[PDF](#)



[3D Step](#)



[Index](#)

索引.

Index.

页码 Page	描述 Description	
1	主要特点 Main characteristics	
2	订货举例 Ordering example	
3	尺寸页码 Dimensional page	DCP30.1...
4		
5	特性 / 接近开关图表 / 气路图 Properties / Diagram for inductive proximity switch / Pneumatic plan	
6	备件 / Spare parts	



订货举例

Ordering example.

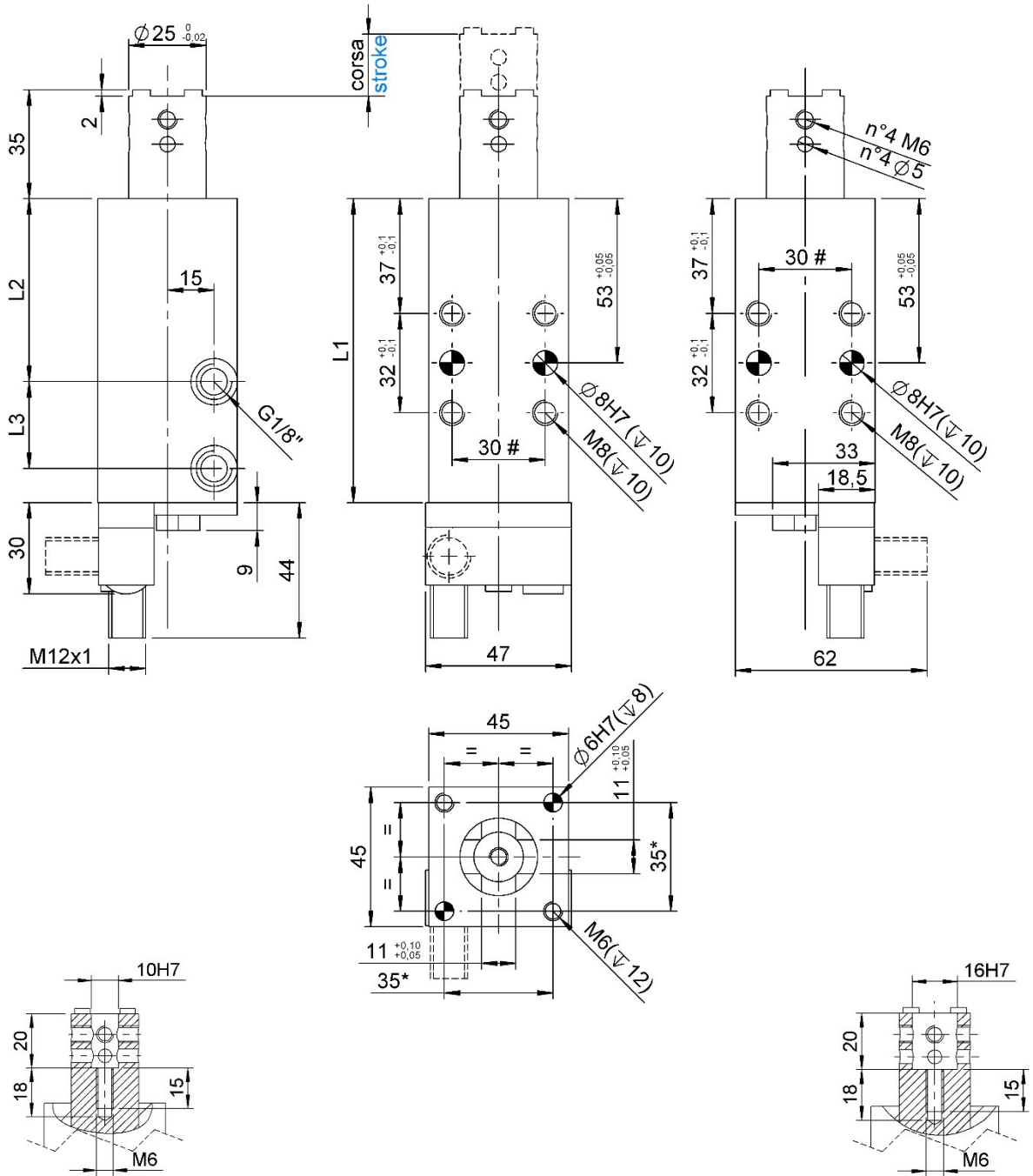
DCP30.1	-	BN	-	40	-	I					
<p>型号和气缸缸径: Type and cylinder bore:</p> <p>DCP30 定位单元 气缸缸径 30 mm locator with pneumatic cylinder bore 30 mm</p> 		<p>行程: Stroke:</p> <table border="1"> <tr> <td style="text-align: center;">20</td> <td style="text-align: center;">20 mm</td> </tr> <tr> <td style="text-align: center;">40</td> <td style="text-align: center;">40 mm</td> </tr> </table>	20	20 mm	40	40 mm		<p>接近开关: Proximity switch:</p>  <p>X: 无接近开关 without proximity switch I: P+F 电感式接近开关 inductive proximity switch P+F</p>			
20	20 mm										
40	40 mm										
		<p>活塞杆类型: Rod type:</p> <p>AN: 氮化活塞杆 孔径 Ø10H7 十字头杆端 nitrided rod with Ø10H7 hole and cross-profiled end</p> <p>BN: 氮化活塞杆 孔径 Ø16H7 十字头杆端 nitrided rod with Ø16H7 hole and cross-profiled end</p> <p>CN: 氮化活塞杆孔径 Ø16H7 扁平杠端 nitrided rod with Ø16H7 hole and flat end</p> <p>DN: 氮化活塞杆孔径 Ø10H7 扁平杠端 nitrided rod with Ø10H7 hole and flat end</p> 									



DCP30.1...

定位销, D. 30, 行程 20/40 mm, 带十字头销端

Locator device, D. 30, stroke 20/40 mm, rod with cross-profiled end



活塞杆型号 **AN**
Rod type **AN**

活塞杆型号 **BN**
Rod type **BN**

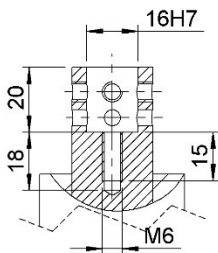
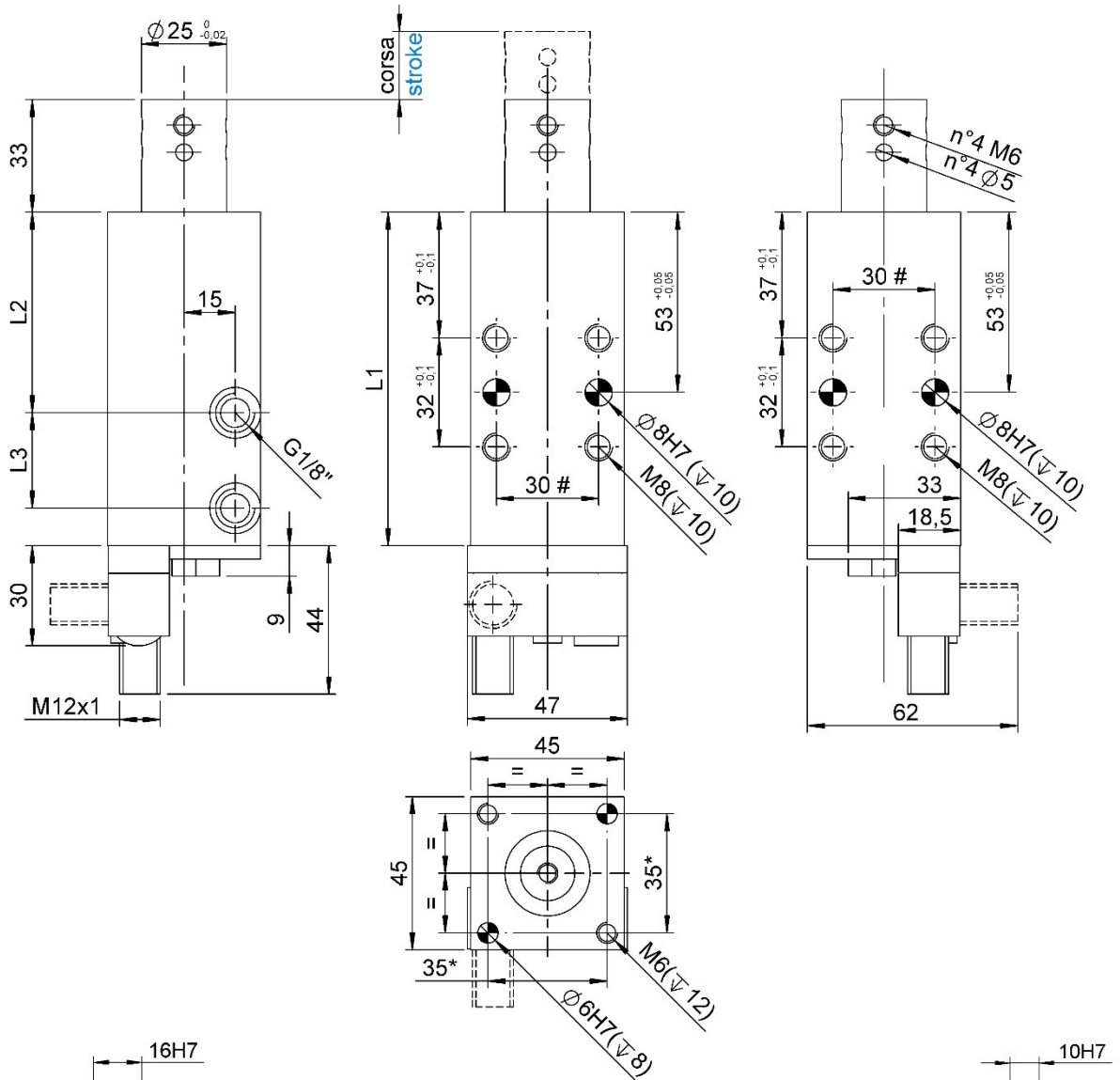
#公差: 定位销孔 ± 0.02 , 螺纹孔 ± 0.1
#Tolerances: dowel holes ± 0.02 , screw holes ± 0.1

类型 Type	气缸缸径 Cylinder bore	活塞杆行程 Rod stroke	L1	L2	L3	重量 Weight	耗气量(5 bar) Air consumption (5 bar)	工作气压 Working pressure
	[mm]	[mm]	[mm]	[mm]	[mm]	[Kg]	[l]	[bar]
DCP30.1...-20I	30	20	98	59	28	~ 0,8	~ 0,1	2 - 8
DCP30.1...-40I		40	138	79	48	~ 1,1	~ 0,3	

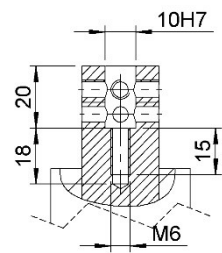


DCP30.1...

定位销, D. 30, 行程 20/40 mm, 带扁平头销端
Locator device, D. 30, stroke 20/40 mm, rod with flat end



活塞杆型号 **CN**
Rod type **CN**



活塞杆型号 **DN**
Rod type **DN**

#公差: 定位销孔 ± 0.02 , 螺纹孔 ± 0.1
#Tolerances: dowel holes ± 0.02 , screw holes ± 0.1

类型 Type	气缸缸径 Cylinder bore	活塞杆行程 Rod stroke	L1	L2	L3	重量 Weight	耗气量(5 bar) Air consumption (5 bar)	工作气压 Working pressure
	[mm]	[mm]	[mm]	[mm]	[mm]	[Kg]	[l]	[bar]
DCP30.1...-20I	30	20	98	59	28	~ 0,8	~ 0,1	2 - 8
DCP30.1...-40I		40	138	79	48	~ 1,1	~ 0,3	



特性

Properties.

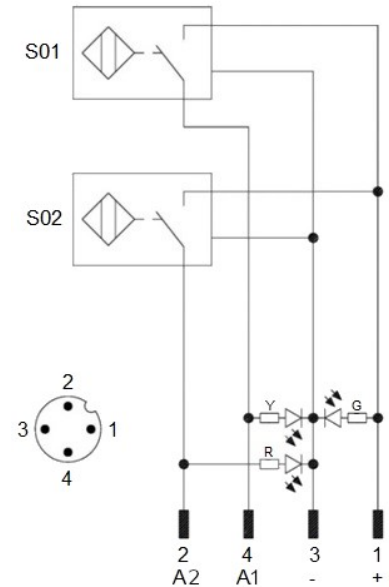
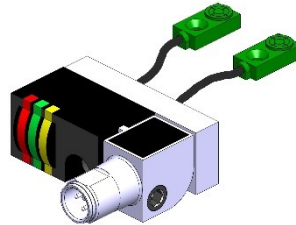
推压力 Pressing force (5 bar)	牵引力 Tensile force (5 bar)	最大静态径向推力 Static side force max.	最大扭矩力 Max. torque	最大角度扭力 Torsion angle max.
[N]	[N]	[N]	[Nm]	[°]
350	250	70	4	± 0,2°

电感式接近开关原理图 (cod. 3/448/C).

Diagram for Inductive proximity switch (cod. 3/448/C).

技术参数 (P+F):

- 输出类型: PNP;
- 输入电压: 10-30 VDC;
- 最大换向电流: 200 mA;
- 消耗电流: < 25 mA;
- 电压差: < 2 V
- 温度范围: -25° / 70° C.



Technical data (P+F):

- Output type: PNP;
- Feeding voltage: 10-30 VDC;
- Max. commutating current: 200 mA;
- Power supply: < 25 mA;
- Voltage drop: < 2 V;
- Temperature range: -25° / 70° C.

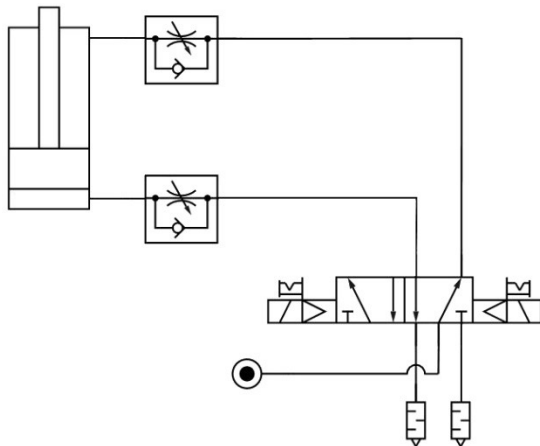
S01 = 打开信号
S01 = opening signal
S02 = 夹紧信号
S02 = closing signal

Y = 黄色 LED / yellow LED
G = 绿色 LED / green LED
R = 红色 LED / red LED

1 = 棕色系 / brown wire
2 = 黑色线 / black wire
3 = 蓝色线 / blue wire
4 = 白色线 / white wire

气路图.

Pneumatic plant.

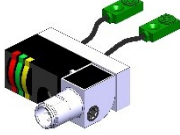
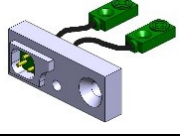
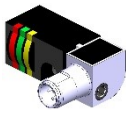



工作气压 Working pressure	耗气量 (5 bar) Air consumption (5 bar)
[bar]	[l]
2 - 8	~ 0,3



备件

Spare parts.

配套元件 # Kit	图片 Picture	描述 Description	代号 Article
接近开关 Proximity switch		P+F 电感式接近开关 Inductive proximity switch P+F	3/448/C
传感器卫星架构 Sensor's satellite		传感器卫星架构 Sensor's satellite	3/448
放大器块 Power amplifier		放大器块红色 LED Power amplifier red LED	3/413
密封套装 Seals kit		DCP30.1型定位销密封组件 Seal for locator DCP30.1	SCR-DCP30.1

本目录取消并替换了以前的目录。我们保留在没有任何通知的情况下进行添加或更改的权利。目录中的产品为标准产品；对特殊应用的任何请求都由技术/商务部门进行评估。本目录文档均属 VEP Automation S.r.l. 所有。未经授权许可，禁止任何形式的复制。

This catalogue cancels and replaces the previous ones. We reserve the right to make additions or changes without any notice. The products in the catalogue are standard; any enquiry of special applications is evaluated by technical/sales department. The complete documentation belongs to VEP Automation S.r.l. and without permission any kind of reproduction is forbidden.

VEP Automation Headquarters

VEP Automation S.r.l

Via San Felice, 37
10092 Beinasco – Torino (Italy)
Tel. +39 011 3972572
Email: info@vepautomation.it
Web: www.vepautomation.it

VEP Automation Germany

VEP Automation GmbH

Fritz Liebsch Str. 29
D 26723 Emden (Germany)
Tel. +49 04921 450758
Email: info@vepautomation.de
Web: www.vepautomation.de

VEP Automation America

VEP Automation S.A.

Av. Toluca 373-3A Col. Olivar de los
Padres, Del. Álvaro Obregón
01780 CDMX – (Ciudad de México)
Tel. +52 55 1718 0929
Email: info@vepautomation.mx
Web: www.vepautomation.mx

VEP Automation China

维亿普自动化（苏州）有限公司

地址: 中国江苏省苏州市吴中区木渎镇
木东路 317 号（联东 U 谷）1 幢 401 室
Room 401, Building No 1, No 317, mudong Road,
Wuzhong, mudu District, Suzhou City (China)
电话. +86 512 6729 2226
邮箱: info@vepautomation.cn
网址: www.vepautomation.cn